



A. Fill in the missing information on the brochure for Monster Park. Then answer the question.

Monster Park

Park Hours


Mon – Fri: open for ____ h

–


Sat – Sun: open for ____ h

–

Admission



Adults

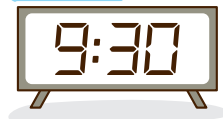
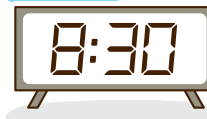


Children & Seniors

Mon - Fri



Sat - Sun



Admission

Adults



Children & Seniors



If I go to the Park with my parents, how much will we pay for admission?



B. Count how much money Leon and his parents have. Then answer the question.



Leon's Dad



Leon's Mom



Leon



Leon's Dad

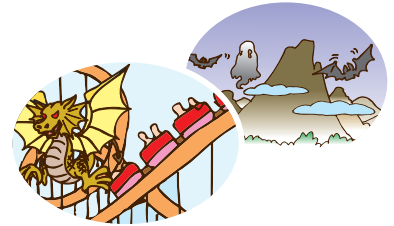
Check the bill of the greatest value for which I can trade my money.



C. Find out which rides the people want to go on and how much they have to pay. Then answer the question.

Ride Prices

Fright Coaster



1. Linda wants to go on two rides. How much does she need to pay?

She needs to pay \$ _____ .

Haunted Castle



2. Leon goes on a ride with his parents. How much do they need to pay for the ride?



They need to pay \$ _____ .

Monster Pit



3. Timothy pays to ride on Haunted Castle and Blood Bath with a \$10 bill. What is his change?

Blood Bath



He will get \$ _____ change.

Scary Mountain



D. Find out how many people are lining up for each ride. Answer the questions.

1. There are 12 men in line for Haunted Castle. The number of women in the line is twice that of the number of men. How many people are there in the line in all?

_____ people in all

2. There are 32 women, 45 men, 36 girls, and 28 boys in line for Blood Bath. How many people are there in all?

_____ people in all

3. There are 46 girls and 68 boys in line for Monster Pit. If 12 boys leave, how many people will there be in the line?

_____ people in all

4. $\frac{1}{2}$ of the people in line for Scary Mountain are boys. If there are 16 boys, how many people are there in the line in all?

_____ people in all

